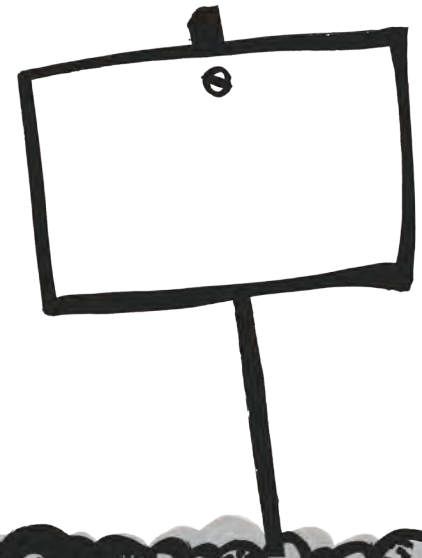


# SPACE GARDENING

During the Principia mission, students across the UK helped Tim by growing rocket lettuce seeds that Tim had to taken to space. Did you know that scientists from the European Space Agency have identified nine other foods that are suitable to grow in space! Zap here to find out what they are!



**I'm Libby,** and I'm in charge of coordinating the experiments that happen on the ISS. Can you find out which foods are suitable to grow in space? Then turn your classroom into a space laboratory and try growing one of these plants. Draw and label your plant here.

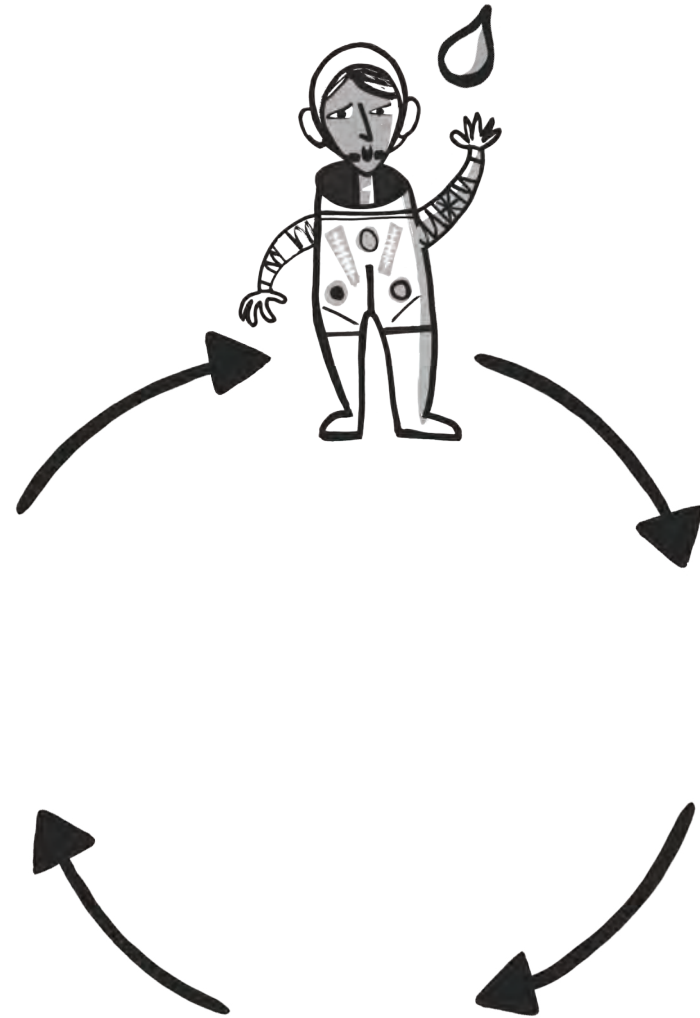


# MAKE A SPLASH IN SPACE!

Astronauts need water just like we do on Earth – to clean their teeth, wash their hands, drink and prepare food. Zap here to see how Tim used water on the ISS.



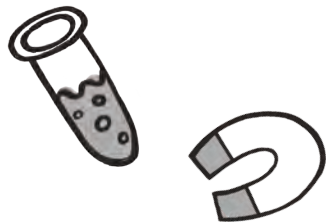
Draw or write the lifecycle of a drop of water to show how astronauts use and reuse this precious liquid on the ISS. Start with one of the astronauts taking a drink. What happens next?



# EXPERIMENTALLY YOURS



Tim did lots of experiments on the ISS, like spinning around really fast to see if he would feel dizzy in space (zap to watch the video!). Now it's time for you to do your first experiment.



I want to find out...

-----

I will need the following materials:

-----

My method will be to:

-----

I predict...

-----



Draw and label a diagram of what your experiment would look like.